



The Rebus® Platform

A unified, real-time extended warehouse and labor management platform.

*"Having Rebus during a WMS go-live is like night and day compared to before we used Rebus. Using Rebus made it very easy to determine warehouse productivity by the hour, shift, in real-time, and immediately identify any productivity dips when we started using the new WMS version. **I will never go live with WMS without Rebus again.**"*

-Senior Director of Supply Chain for Global Consumer Packaging Manufacture

www.longbowadvantage.com

 **Rebus**
Built By  Longbow

The Rebus® Platform is an extended warehouse and labor management platform that provides real-time visibility into the warehouse for distribution teams who need access to make point-in-time decisions about their warehouse operations, labor management, quality assurance, 3PL billing, and labor planning.

Unlike traditional warehousing systems and business operations tools, Rebus® was purpose-built to help warehouse leaders manage their shifts confidently with real-time insights into operational performance. By connecting disparate systems across the distribution network in one or multiple locations, logistics professionals have unparalleled access to view and manage their shifts like never before.

We believe in giving warehouse leaders the power to lead by empowering them to own and manage their own data.

Rebus Warehouse Visibility

VISIBILITY STARTS WITH THE WAREHOUSE

Rebus Warehouse Visibility is the only solution that gives visibility into the heart of the supply chain – the warehouse. It enables teams to see and react to activities happening in the warehouse when they happen, across distribution centers and WMS solutions.



Rebus Intelligent Labor

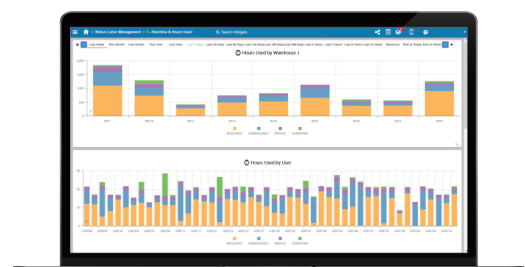
THE FUTURE OF LABOR MANAGEMENT IS SMART

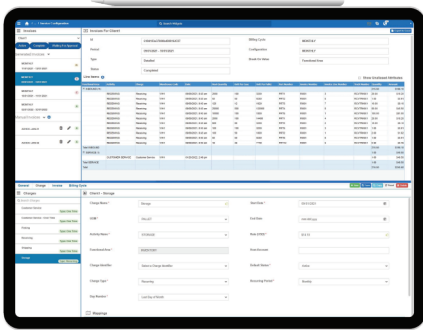
Rebus Intelligent Labor is the only LMS that's actually easy to implement and even easier to use. Our solution leverages historical data to create smarter performance tracking across the life of the system without complex and costly projects.

Rebus Quality Assurance

IMPROVED FULFILLMENT TO SAFEGUARD YOUR BRAND

Rebus Quality Assurance provides protection from massive financial risk with improved inventory fulfillment and traceability. With the push of a button, update inventory statuses and status changes across your entire distribution network.





Rebus 3PL Billing

FLEXIBLE AND TRANSPARENT PROCESSES FOR EACH CLIENT ACROSS THE NETWORK

Rebus 3PL Billing automates billing processes for each client, optimizing for time and performance. With complete flexibility, create unique customer logic for varying billing cycles and payment terms, easily customizing process flows, tasks, and generating reports.

Rebus Labor Planning

REAL-TIME LABOR PLANNING FOR TODAY AND THE FUTURE

Rebus Labor Planning gives you the ability to predict your future labor needs, as well as real-time insight into progress against your planned labor. With agnostic Labor Planning you can read historical data from Rebus Intelligent Labor or any other LMS so you can forecast your staffing goals effectively. The future of the warehouse is real-time. Quit relying on spreadsheets and a hunch.





“Rebus solved in 2 weeks what internal teams had been trying to solve for over 2 years.”

- Head of Logistics, Top 10 Global Food Manufacturer

Contact us to learn more about Rebus.

www.longbowadvantage.com | 1.888.904.4005 | info@longbowadvantage.com